



Neile Court, DL14 7GE
5 Bed - House - Detached
Offers Over £290,000

ROBINSONS
SALES • LETTINGS • AUCTIONS • SURVEYS

Neile Court , DL14 7GE

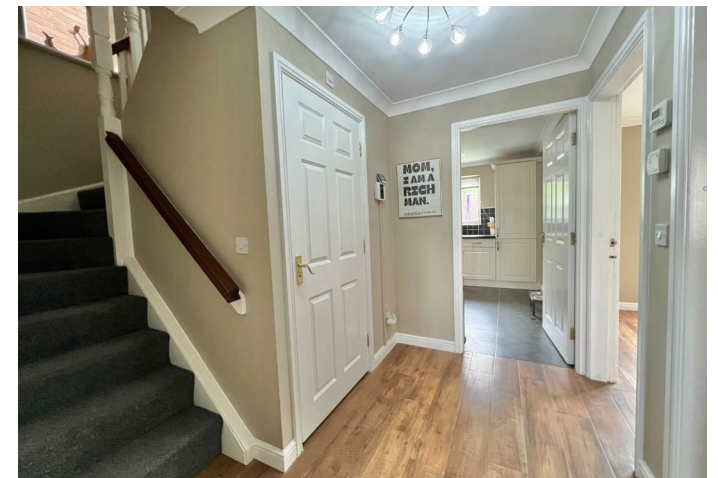
Robinsons are delighted to present to the sales market this substantial five-bedroom detached family home, pleasantly situated within a sought-after cul-de-sac location. Offering spacious and versatile accommodation across three floors, together with a garage, triple-width driveway, and enclosed rear garden, this impressive property is ideally suited to growing families.

The home benefits from gas central heating which was newly installed in the past 3 years and UPVC double glazing throughout. The home also further benefits from Therma bead installation which was installed in the last 5 years

The well-appointed accommodation briefly comprises an inviting entrance hallway, WC, a spacious lounge featuring a bay window to the front aspect, and a separate dining room with doors opening onto the rear garden. The kitchen is fitted with a range of wall, base, and drawer units, along with integrated hob, oven, and fridge/freezer and dishwasher. A useful utility room provides additional space for laundry appliances.

To the first floor are four double bedrooms, including a front-facing bedroom with en-suite shower room, together with a modern family bathroom fitted with a three-piece suite.

Occupying the entire second floor is the impressive principal bedroom, which benefits from a range of fitted wardrobes and storage solutions, an attractive re-fitted en-suite shower room, and a large walk-in storage cupboard accessed from the landing.













Outside

Externally, the property enjoys a triple-width driveway leading to a single garage. To the rear is a private enclosed garden featuring a patio seating area, artificial lawn, and garden shed.

Location

Neile Court forms part of a popular residential development and is conveniently located close to local amenities, well-regarded schools, and excellent transport and bus links.

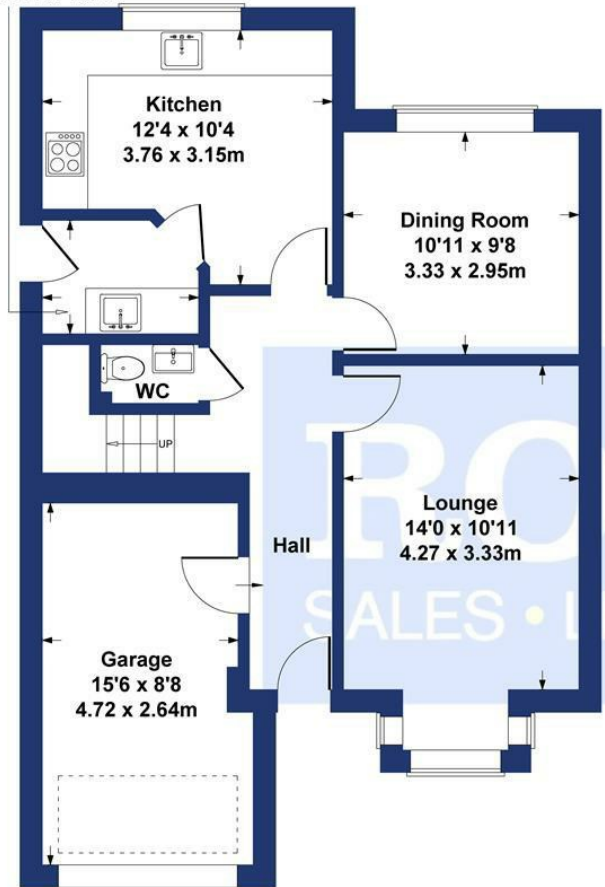
Viewings

Early viewing is highly recommended. Contact Robinsons today for further information or to arrange an internal inspection.





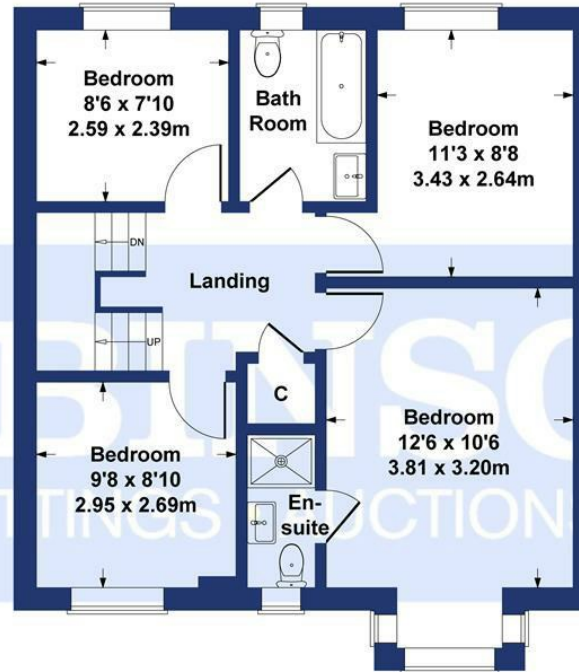
Utility Room
6'11 x 5'0
2.11 x 1.52m



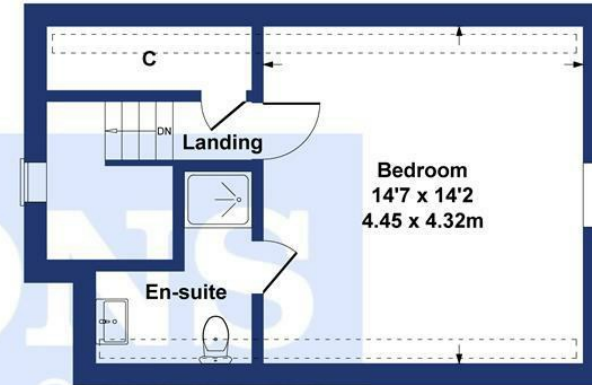
GROUND FLOOR

Neile Court Bishop Auckland

Approximate Gross Internal Area
1671 sq ft - 155 sq m



FIRST FLOOR



SECOND FLOOR

SKETCH PLAN FOR ILLUSTRATIVE PURPOSES ONLY

All measurements walls, doors, windows, fittings and appliances, their sizes and locations, are approximate only. They cannot be regarded as being a representation by the seller, nor their agent.

Produced by Potterplans Ltd. 2026

Energy Efficiency Rating		
	Current	Potential
Very energy efficient - lower running costs		
(82 plus) A		
(61-81) B		
(69-80) C		
(55-68) D		
(39-54) E		
(21-38) F		
(1-20) G		
Not energy efficient - higher running costs		
England & Wales	EU Directive 2002/91/EC	

For clarification we wish to inform prospective purchasers that we have prepared these sales particulars as a general guide. We have not carried out a detailed survey, nor tested the services, appliances and specific fittings. Room sizes should not be relied upon for carpets and furnishings, if there are important matters which are likely to affect your decision to buy, please contact us before viewing the property. Robnsons can recommend financial services, surveying and conveyancing services to sellers and buyers. Robnsons staff may benefit from referral incentives relating to these services.



120 Newgate Street, Bishop Auckland, DL14 7EH
Tel: 01388 458111
info@robinsonsbishop.co.uk
www.robinsonsestateagents.co.uk

